



VILLA JULIANNE

FRIENDS

PAROS



Bedrooms: 7



Bathrooms: 6



Guests: 15

Nested on the area of Voutakos, looks towards the natural landscape and further to the azure sea, a few minutes walk away from two beaches and the village of Alikí. The property is ideal for sharing between families and large groups.

The pool is centre stage of the outdoor area, with the surrounding loungers inviting you to stretch out in the blissful sunshine or maybe relax and take an afternoon snooze. The shaded areas provide shelter from hot days while the dining areas outdoor invite the guests to gather and celebrate their dazzling vista off the south coast of Paros.

The interior is influenced by the local island design with comfortable furniture and natural colours. The homely country style kitchen is the place to come together to prepare meals and enjoy the Mediterranean cuisine. The bedrooms are spacious, with white prevailing and minimal yet cozy furniture.

Villa Julianne is inviting guests to lay their hair down and celebrate their Cycladic escape beyond spaces.

Features

Swimming Pool 12 x 6

Beach Proximity

Wi-Fi

Satellite TV

Ceiling Fans in all bedrooms

Layout

Ground Level

- ✓ 1 Double Bedroom, en-suite bathroom, direct access to a porch and to the pool, sea view
- ✓ 1 Twin Bedroom, direct access to a private porch, private bathroom
- Living Room
- Dine Area
- Open plan Kitchen

Upper Level

- ✓ 1 Master Bedroom, en-suite bathroom with bathtub with a private terrace and views
- Office Area with private balcony

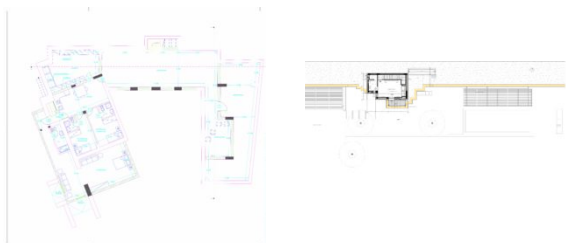
Ground Patio Level: Independent Entrance Studio

- ✓ 1 Triple Bedroom (1 Double and 1 Single Bed), independent entrance, en-suite bathroom with shower, office desk, dressing room, direct access to large private balcony with independent entrance
- ✓ 1 Double and 1 Twin Bedroom sharing a bathroom with shower, independent entrance, access to balcony and pool
- ✓ 1 Twin Bedroom, en-suite bathroom with shower, independent entrance

Outdoor Area

- | | |
|------------------------|-----------------------|
| ✓ Swimming Pool 12 x 6 | ✓ Pergola shaded area |
| ✓ Sunbeds | ✓ Dine area |
| ✓ Terrace | ✓ BBQ |
| ✓ Lounge areas | ✓ Private Parking |

Floor Plans



Daily Maid Service

Change of linen twice a week

Welcome Basket

Signature Toiletries



Travel Assistance

Concierge Assistance

Services

✓ Bespoke Concierge Services

✓ Private Chef & Cooks

✓ Transport & Transfers

✓ Yacht & Helicopter Charter

✓ Child Care

✓ Bespoke Experiences & Activities

For more information please visit our [BS Services](#) section.

Distances



Airport: 2 klm / 5 min drive



Port: 10.3 klm / 15 min drive



Town: 22.3 klm / 35 min drive



Beach: 0.9 klm / 10 min drive